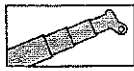




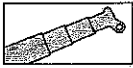
Tragfähigkeiten
Lifting capacities
Capacités de levage
Capacidades de elevación



12.5t 'Taxi' Version

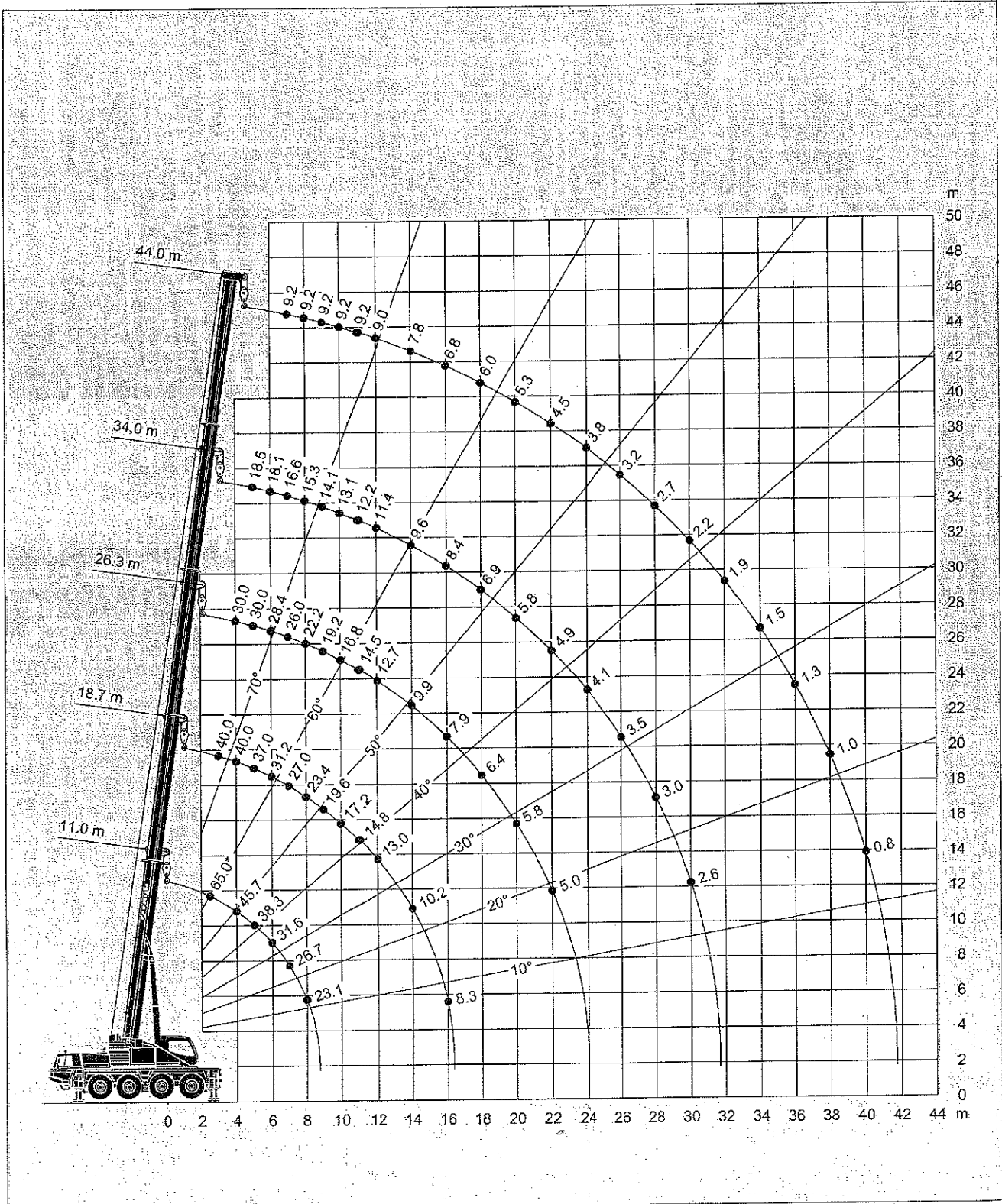
DIN/ISO/EN

 m	11.0 m	14.8 m	18.7 m	22.5 m	26.3 m	30.1 m	34.0 m	37.8 m	41.6 m	44.0 m
2.5	65.0									
3.0	53.8	50.0	40.0							
3.5	49.4	47.6	40.0	35.0						
4.0	45.7	44.1	40.0	34.9	30.0					
4.5	42.4	41.0	39.7	33.2	30.0	29.4				
5.0	38.3	38.2	37.0	32.0	30.0	22.2	18.5			
6.0	31.6	31.8	31.2	31.2	28.4	20.1	18.1	14.0		
7.0	26.7	27.0	27.0	26.7	26.0	18.3	16.6	14.0	10.4	9.2
8.0	23.1	23.3	23.2	22.7	22.2	16.8	15.3	14.0	10.4	9.2
9.0		19.5	19.6	20.3	19.2	15.4	14.1	13.1	10.4	9.2
10.0		16.8	17.2	17.2	16.8	14.3	13.1	12.2	10.4	9.2
11.0		14.5	14.8	14.8	14.5	13.2	12.2	11.4	10.4	9.2
12.0		12.7	13.0	13.0	12.7	12.3	11.4	10.7	9.9	9.0
14.0			10.2	10.2	9.9	9.6	9.6	9.4	8.9	7.8
16.0			8.3	8.3	7.9	8.0	8.4	8.0	7.9	6.8
18.0				7.1	6.4	7.1	6.9	6.8	6.5	6.0
20.0				6.0	5.8	6.0	5.8	5.7	5.4	5.3
22.0					5.0	5.0	4.9	4.8	4.5	4.5
24.0						4.3	4.1	4.0	3.8	3.8
26.0						3.7	3.5	3.4	3.2	3.2
28.0							3.0	2.9	2.6	2.7
30.0							2.6	2.5	2.2	2.2
32.0								2.1	1.8	1.9
34.0								1.8	1.5	1.5
36.0									1.2	1.3
38.0									1.0	1.0
40.0										0.8
 %	I 0	46/0/0/0	93/46/0/0/0/0	93/46/46/0/0	93/93/46/0	93/93/0	93/46/0	93/46	93	100
II	0	0/46/0/0	0/46/93/46/0/0	46/93/46/46/0	93/46/46/0	93/46/46	93/46/93	93/93	93	100
III	0	0/0/46/0	0/0/0/46/46/0	0/0/46/46/46	0/46/46/93	46/46/93	46/93/93	93/93	93	100
IV	0	0/0/0/46	0/0/0/0/46/93	0/0/0/46/93	0/0/46/93	0/46/93	46/93/93	46/93	93	100



12.5t 'Taxi' Version

DIN/ISO/EN



* Nach hinten mit Zusatzhubausrüstung ! * Over rear with additional lifting equipment ! * A l'arrière avec équipement supplémentaire ! * Sobre la parte trasera con equipo adicional

Tragfähigkeiten
Lifting capacities
Capacités de levage
Capacidades de elevación

12.5t

'Taxi' Version

DIN/ISO/EN

m	11.0 m + 9.0 m			30.1 m + 9.0 m			41.6 m + 9.0 m			44.0 m + 9.0 m		
	0°	20°	40°	0°	20°	40°	0°	20°	40°	0°	20°	40°
3.0	10.5											
3.5	10.5											
4.0	10.5	10.5										
4.5	10.5	10.5		10.5								
5.0	10.5	10.5		10.5								
6.0	10.5	10.5	8.9	10.5								
7.0	10.5	9.9	8.5	10.5			6.0			5.4		
8.0	10.5	9.4	8.1	10.1	8.1		6.0			5.4		
9.0	10.4	8.9	7.8	9.6	7.7		6.0			5.4		
10.0	9.5	8.5	7.5	9.0	7.3	6.4	6.0			5.4		
11.0	8.7	8.2	7.2	8.5	7.0	6.1	6.0	5.4		5.4	5.1	
12.0	8.1	7.8	7.0	8.1	6.7	5.9	5.7	5.2		5.3	4.9	
14.0	7.1	7.2	6.7	7.3	6.2	5.5	5.2	4.9	4.4	4.9	4.6	4.3
16.0	6.3		6.8	6.7	5.8	5.2	4.8	4.5	4.2	4.5	4.3	4.0
18.0				6.0	5.4	4.9	4.4	4.3	3.9	4.2	4.0	3.8
20.0				5.3	5.1	4.7	4.1	4.0	3.7	3.8	3.8	3.6
22.0				4.4	4.7	4.5	3.8	3.7	3.5	3.6	3.5	3.4
24.0				3.7	3.9	4.1	3.6	3.5	3.4	3.3	3.3	3.2
26.0				3.1	3.3	3.4	3.2	3.3	3.2	2.9	3.0	3.0
28.0				2.5	2.7	2.8	2.7	2.9	3.0	2.6	2.7	2.7
30.0				2.1	2.2	2.3	2.2	2.4	2.5	2.2	2.4	2.4
32.0				1.7	1.8	1.8	1.9	2.0	2.1	1.8	2.0	2.1
34.0				1.4	1.4		1.5	1.7	1.7	1.5	1.6	1.7
36.0							1.2	1.4	1.4	1.2	1.3	1.4
38.0							1.0	1.1	1.1	1.0	1.1	1.1
40.0							0.8	0.8	0.8	0.7	0.8	0.9
42.0							0.6	0.6	0.6	0.5	0.6	0.6
%	I	0			93			93			100	
	II	0			46			93			100	
	III	0			46			93			100	
	IV	0			46			93			100	

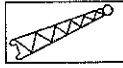
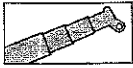
12.5t

'Taxi' Version

DIN/ISO/EN

m	11.0 m + 16.0 m			30.1 m + 16.0 m			41.6 m + 16.0 m			44.0 m + 16.0 m		
	0°	20°	40°	0°	20°	40°	0°	20°	40°	0°	20°	40°
3.0	7.9											
3.5	7.9											
4.0	7.9											
4.5	7.9											
5.0	7.9											
6.0	7.6			4.8								
7.0	7.2			4.8								
8.0	6.7	5.4		4.8			3.5			3.3		
9.0	6.3	5.1		4.8			3.5			3.3		
10.0	5.9	4.9		4.8			3.5			3.3		
11.0	5.6	4.7		4.8			3.5			3.3		
12.0	5.3	4.4	3.9	4.8	4.6		3.5			3.3		
14.0	4.7	4.1	3.7	4.8	4.4		3.5	3.5		3.3		
16.0	4.2	3.8	3.4	4.8	4.2		3.5	3.5	3.3	3.3	3.1	
18.0	3.7	3.5	3.3	4.8	4.0	3.4	3.5	3.3		3.3	3.1	2.8
20.0	3.4	3.3	3.2	4.6	3.8	3.3	3.5	3.1		3.3	3.0	2.8
22.0	3.1	3.2	3.1	4.3	3.6	3.2	3.2	2.9	2.7	3.0	2.8	2.6
24.0	2.8	3.1		4.0	3.5	3.1	3.0	2.8	2.6	2.8	2.7	2.5
26.0				3.4	3.3	3.0	2.8	2.7	2.5	2.6	2.5	2.4
28.0				2.9	3.2	2.9	2.7	2.6	2.4	2.4	2.4	2.3
30.0				2.4	2.7	2.6	2.4	2.4	2.3	2.1	2.2	2.2
32.0				2.0	2.3	2.5	2.0	2.3	2.2	1.9	2.0	2.1
34.0				1.7	1.9	2.0	1.7	2.0	2.1	1.7	1.8	1.9
36.0				1.4	1.6	1.7	1.4	1.7	1.8	1.4	1.6	1.7
38.0				1.2	1.3	1.3	1.2	1.4	1.5	1.1	1.4	1.5
40.0				0.9	1.0		0.9	1.1	1.2	0.9	1.1	1.2
42.0				0.7	0.7		0.7	0.9	1.0	0.7	0.9	1.0
44.0							0.5	0.7	0.7	0.5	0.7	0.7
46.0								0.5	0.5		0.5	0.5
%	I	0			93			93			100	
	II	0			46			93			100	
	III	0			46			93			100	
	IV	0			46			93			100	

Hubhöhen
Lifting heights
Hauteurs de levage
Alturas de elevación



12.5t 'Taxi' Version

DIN/ISO/EN

